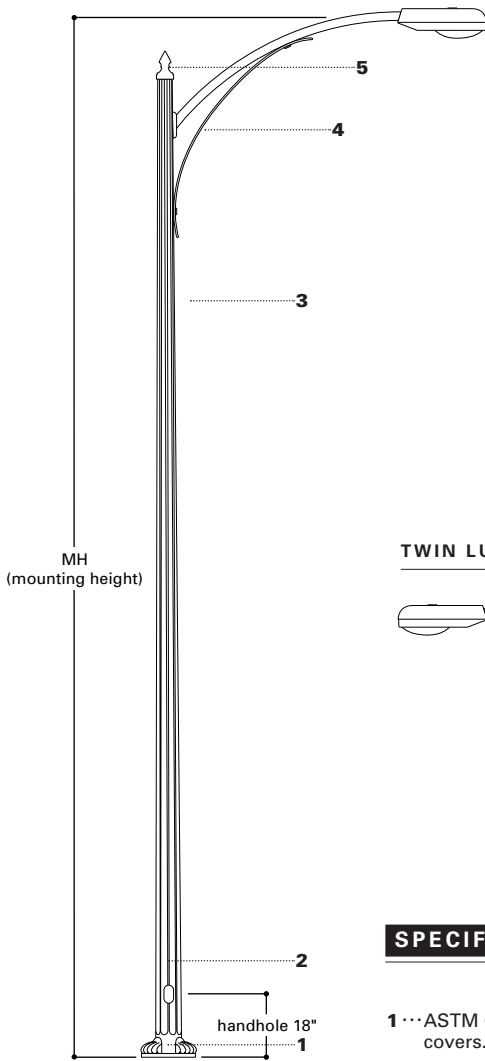


DETAILS

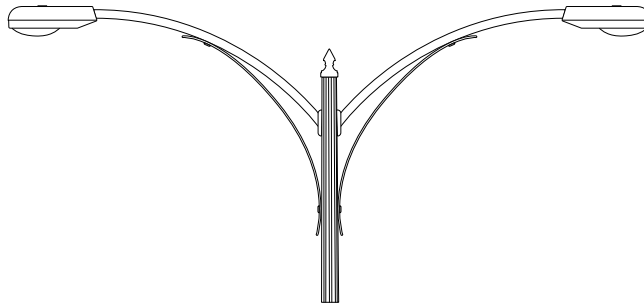
**FTS  
FLUTED  
TAPERED  
STEEL**

**21' - 41'**  
Mounting Height

FLUTED TAPERED STEEL

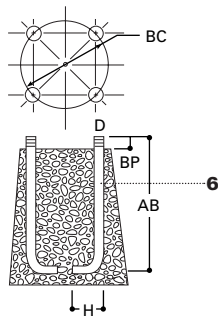
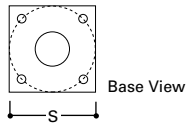


TWIN LUMINAIRE ARMS AVAILABLE



**SPECIFICATION FEATURES**

- 1...ASTM Grade steel base plate. Pole provided with decorative cast aluminum nut covers.
- 2...Hand hole assembly 4" x 6".
- 3...ASTM 595 steel fluted shaft. Pole cross section is an 8 Sharp Flute.
- 4...Luminaire arm is 2.375" tubing available in 4', 6', and 8' lengths. Decorative scroll is attached to the underside and to the pole with hex head bolts.
- 5...Decorative cast aluminum pole cap attached using three (3) set screws.
- 6...Anchor bolt per ASTM A576 with (2) nuts, (2) flat washer, and (1) lock washer. Nuts, washers and threaded portion of bolt are hot dip galvanized 3" hook for 3/4" bolt. 4" hook for 1" bolt.



**FOUR BOLT ANCHORAGE** (see ordering information)

- BC=Bolt Circle
- BP=Bolt Projection
- AB=Bolt Dimensions
- D=Bolt Diameter
- H=Bolt Dimensions

**FINISH COLORS**

- F=Dark Bronze
- S=Silver
- V=Grey
- W=White
- Y=Black

**ORDERING INFORMATION**

The following information illustrates the correct way to enter an order for **FTS6A21SFP14**. The ordering designation is detailed as follows.

Fluted <b>F</b>	Tapered <b>T</b>	Steel <b>S</b>	Shaft <sup>3</sup> Size <b>6.5</b>	Mounting Height (ft.) <b>21</b>	Base Type <b>F</b>	Finish <sup>3</sup> <b>P</b>	Fixture Mounting & Type <b>1</b>	No. & Location of Arms <b>1</b>	Arm Lengths <b>4</b>
--------------------	---------------------	-------------------	--	--	--------------------------	---------------------------------	---	--	----------------------------

Mtg. Height	Catalog Number	Base Square (In.)	Bolt Circle Dia. (In.)	Bolt Proj. (In.)	Shaft Size (In.)	Anchor Bolt Dia. & Length (In.)	Arm Length (Ft.)	Net. Wt. (Lbs.)	EPA Rating Per Arm EPA At Pole Top (Sq. Ft.)				Max. Fixture Load—Include Bracket (Lbs.)
<b>MH</b>		<b>S</b>	<b>BC</b>	<b>BP</b>	<b>B</b>		<b>AB</b>	<b>70</b>	<b>80</b>	<b>90</b>	<b>100</b>		
21	FTS6A21SFP14	10	9 1/2	3 3/4	6 1/2	1 x 36 x 4	4	180	1.7	1.7	1.7	1.7	60
21	FTS6A21SFP16	10	9 1/2	3 3/4	6 1/2	1 x 36 x 4	6	200	1.7	1.7	1.7	1.7	60
21	FTS6A21SFP18	10	9 1/2	3 3/4	6 1/2	1 x 36 x 4	8	220	1.7	1.7	1.7	1.7	60
21	FTS6A21SFP24	10	9 1/2	3 3/4	6 1/2	1 x 36 x 4	4	220	1.7	1.7	1.7	1.7	120
21	FTS6A21SFP26	10	9 1/2	3 3/4	6 1/2	1 x 36 x 4	6	240	1.7	1.7	1.7	1.7	120
21	FTS6A21SFP28	10	9 1/2	3 3/4	6 1/2	1 x 36 x 4	8	260	1.7	1.7	1.7	1.7	120
31	FTS8A31SFP14	11 1/2	11	4	8	1 x 36 x 4	4	295	1.7	1.7	1.7	1.7	60
31	FTS8A31SFP16	11 1/2	11	4	8	1 x 36 x 4	6	315	1.7	1.7	1.7	1.7	60
31	FTS8A31SFP18	11 1/2	11	4	8	1 x 36 x 4	8	335	1.7	1.7	1.7	1.7	60
31	FTS8A31SFP24	11 1/2	11	4	8	1 x 36 x 4	4	335	1.7	1.7	1.7	1.7	120
31	FTS8D31SFP24	11 1/2	11	4	8	1 x 36 x 4	4	335	1.7	1.7	1.7	1.7	120
31	FTS8A31SFP26	11 1/2	11	4	8	1 x 36 x 4	6	355	1.7	1.7	1.7	1.7	120
31	FTS8D31SFP26	11 1/2	11	4	8	1 x 36 x 4	6	355	1.7	1.7	1.7	1.7	120
31	FTS8A31SFP28	11 1/2	11	4	8	1 x 36 x 4	8	375	1.7	1.7	1.7	1.7	120
31	FTS8D31SFP28	11 1/2	11	4	8	1 x 36 x 4	8	375	1.7	1.7	1.7	1.7	120
41	FTS9A41SFP14	13	13	5 1/4	9 1/2	1 1/4 x 42 x 6	4	395	1.7	1.7	1.7	1.7	60
41	FTS9D41SFP14	13	13	5 1/4	9 1/2	1 1/4 x 42 x 6	4	395	1.7	1.7	1.7	1.7	60
41	FTS9A41SFP16	13	13	5 1/4	9 1/2	1 1/4 x 42 x 6	6	415	1.7	1.7	1.7	1.7	60
41	FTS9D41SFP16	13	13	5 1/4	9 1/2	1 1/4 x 42 x 6	6	415	1.7	1.7	1.7	1.7	60
41	FTS9A41SFP18	13	13	5 1/4	9 1/2	1 1/4 x 42 x 6	8	435	1.7	1.7	1.7	1.7	60
41	FTS9D41SFP18	13	13	5 1/4	9 1/2	1 1/4 x 42 x 6	8	435	1.7	1.7	1.7	1.7	60
41	FTS9A41SFP24	13	13	5 1/4	9 1/2	1 1/4 x 42 x 6	4	420	1.7	1.7	1.7	1.7	120
41	FTS9D41SFP24	13	13	5 1/4	9 1/2	1 1/4 x 42 x 6	4	420	1.7	1.7	1.7	1.7	120
41	FTS9A41SFP26	13	13	5 1/4	9 1/2	1 1/4 x 42 x 6	6	440	1.7	1.7	1.7	1.7	120
41	FTS9D41SFP26	13	13	5 1/4	9 1/2	1 1/4 x 42 x 6	6	440	1.7	1.7	1.7	1.7	120
41	FTS9A41SFP28	13	13	5 1/4	9 1/2	1 1/4 x 42 x 6	8	460	1.7	1.7	1.7	1.7	120
41	FTS9D41SFP28	13	13	5 1/4	9 1/2	1 1/4 x 42 x 6	8	460	1.7	1.7	1.7	1.7	120

**NOTES:** <sup>1</sup> Catalog number includes pole with anchor bolts with double nuts (BEFORE INSTALLING ANCHOR BOLTS MAKE SURE PROPER ANCHOR BOLT TEMPLATE IS OBTAINED FROM COOPER LIGHTING HEADQUARTERS). <sup>2</sup> Shaft size, base plate, anchor bolts and projections may vary slightly—all dimensions nominal. <sup>3</sup> Paint over galvanized steel available. Consult your Cooper Lighting Representative.

NOTE: Specifications and dimensions subject to change without notice.



Visit our web site at [www.cooperlighting.com](http://www.cooperlighting.com)

Customer First Center 1121 Highway 74 South Peachtree City, GA 30269 770.486.4800 FAX 770.486.4801 ADH020018